



£1,350 Per *Unfurnished*

A bright and spacious two DOUBLE bedroom GROUND FLOOR apartment AVAILABLE NOW, presented in good condition throughout. The property is located within a popular modern development situated within walking distance of High Wycombe town centre, mainline railway station (which connects to London Marylebone in less than 30 minutes) and the beautiful Rye Park & Lido. The accommodation comprises: entrance hall with two storage cupboards, large open plan lounge/kitchen/diner, two DOUBLE bedrooms and modern family bathroom. The property further benefits: GATED undercroft allocated parking bay, communal gardens, security intercom system and UPVC double glazing.

HOLDING FEE: £311.53
DEPOSIT REQUIRED: £1,557.69

- SHORT WALK OF TRAIN STATION
- AVAILABLE NOW
- GROUND FLOOR APARTMENT
- GOOD CONDITION THROUGHOUT
- UNFURNISHED
- TWO DOUBLE BEDROOMS
- OPEN PLAN LOUNGE/KITCHEN/DINER
- GATED UNDERCROFT ALLOCATED PARKING
- SECURITY INTERCOM SYSTEM
- SOUGHT AFTER DEVELOPMENT



30 Ives House, Ercolani Avenue, High Wycombe, Bucks, HP13 7FZ

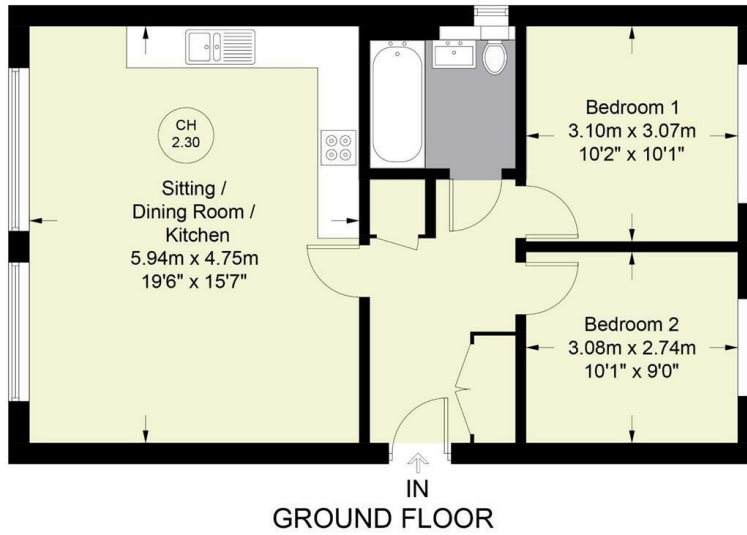
Estate Agents ~ Lettings Agents ~ Valuers ~ Independent Mortgage Advisors

Ercolani Avenue

Approximate Gross Internal Area = 660 sq ft / 61.3 sq m



CH 2.30 = Ceiling Height



GROUND FLOOR

Floor Plan produced for Hurst by Media Arcade ©.
Illustration for identification purposes only. Window and door openings are approximate. Whilst every attempt is made to assure accuracy in the preparation of this plan, please check all dimensions, shapes and compass bearings before making any decisions reliant upon them.

